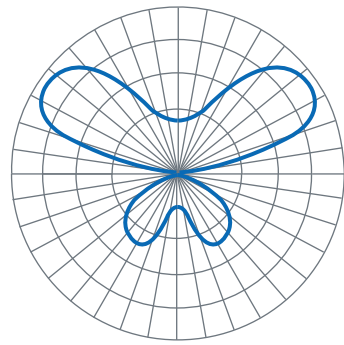
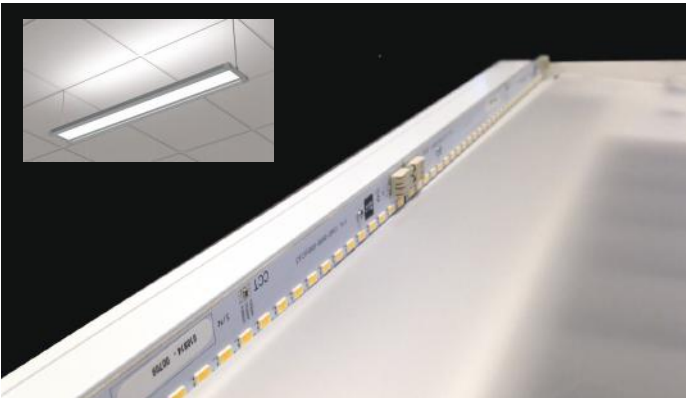


# SpekLED™ with MicroTEK™

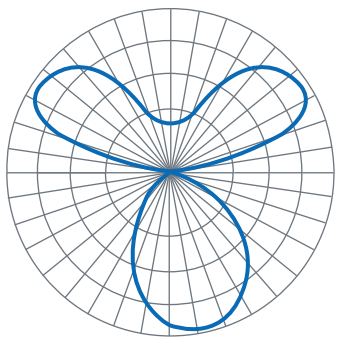
SpekLED™ with MicroTEK™ combines our LED Engines with advanced optical components to provide high levels of beam control with high efficiency and good color mixing. Products can be customized to fit almost any board layout.

## EDGE LIT LUMINAIRE

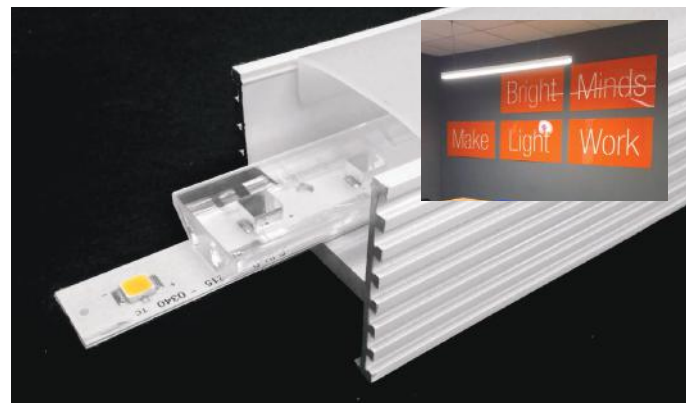


Direct/indirect luminaires using edge lighting have a wide fill factor.

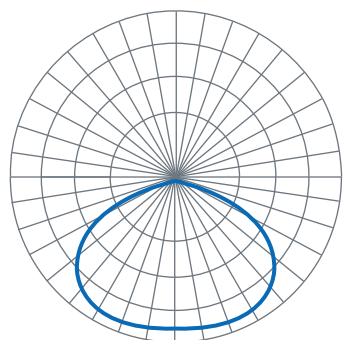
## SUSPENDED PENDANT



Luminaires using SpekLED™ Integrated can create a variety of beam distributions



## CONTINUOUS RUN



Recessed lighting allows fixture to be curved and run continuous lengths.

# Fusion optix

## Bright Minds™

19 Wheeling Avenue  
Woburn, MA 01801

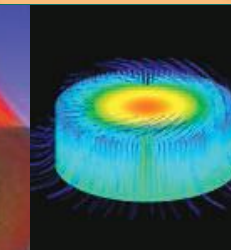
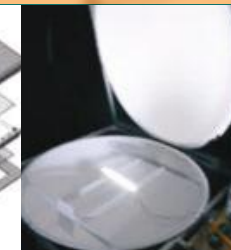
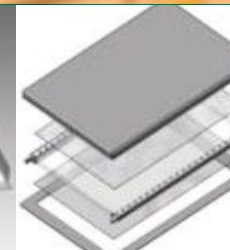
781-995-0805

fusionoptix.com

sales@fusionoptix.com

# SpekLED™

### OEM SUPPORT



Specification Grade  
LED Engine Platform  
For LED Lighting

# Fusion optix

Bright Minds

Product Design

BOM Development

Product Testing

Optical Modeling

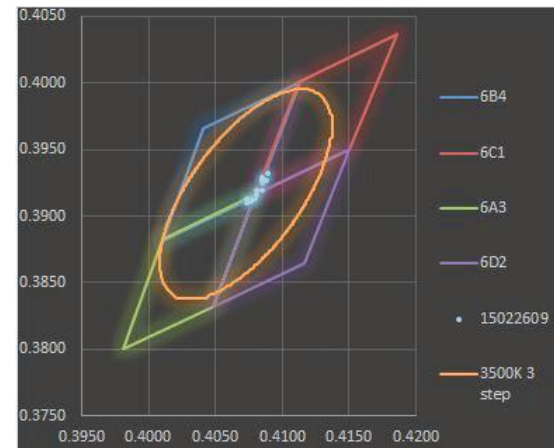
Thermal Modeling

Quality Control



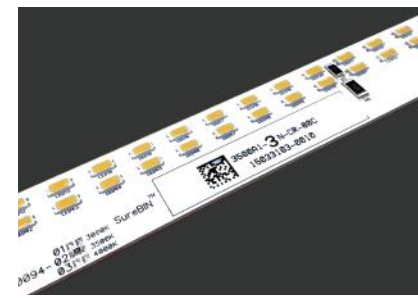
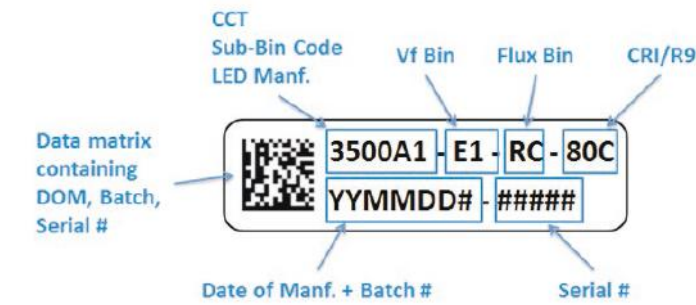
# SpekLED™ with SureBIN™

SpekLED™ line of LED engines utilizes SureBIN™ technology to ensure you get the best possible light and color management.



## LED Board Matching with SureBIN™

Proper binning of LEDs is critical to achieve color consistency between fixtures in a lighting installation. This not only includes the color bin, but also the manufacturer, voltage bin, and flux bin. The Fusion Optix SureBIN™ Code (SBC) is used to verify that all SpekLED™ LED boards in a particular installation can be used together without any issues.

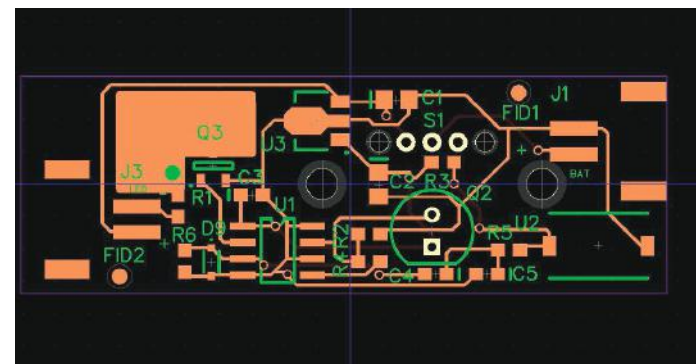


SureBIN™ labeling



## Quality and Testing

We provide only the highest quality LEDs, components, PCBs, and services. Our customers will benefit from the comfort of knowing their product will be delivered correctly every time. Through comprehensive testing services using our in-house facilities, we are prepared to make sure that your product will achieve the results you want.



## Design

Our capabilities enable us to rapidly deliver mockups or prototypes using quick-turn processes and standard parts. We also provide fully functional prototypes using the complete specified BOM, enabling customers to test and evaluate products and increase speed to market. We guide our customers to the right solutions to help them develop products with the performance they need.

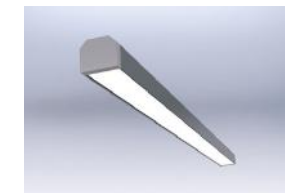
# SpekLED™ Products

Fusion Optix family of LED engines provide a high-performance customized solution for incorporation into a wide range of LED lighting products, including troffer, pendant, and other luminaires.



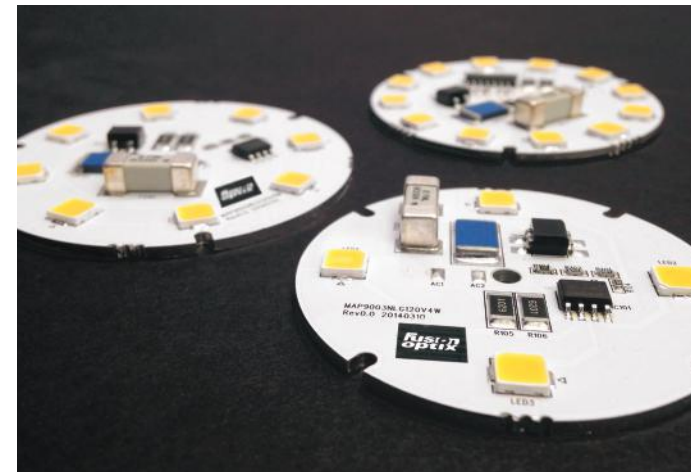
## SpekLED™ White DC

SpekLED™ White DC LED boards are designed for high efficiency and long life, suitable for a wide variety of applications. Range of color temperatures available from 2700K to 5000K with high CRI and R9 values. Products include single color and color tunable options.



### Applications:

Downlights, Troffers, Pendants, Edge Lighting, Direct/Indirect



## SpekLED™ White AC

SpekLED™ White AC LED boards are suitable for direct AC applications. Reduce total system cost by eliminating the need for an external driver. Range of color temperatures available from 2700K to 5000K with high CRI and R9 values.



### Applications:

Downlights, Troffers, Pendants, Edge Lighting, Direct/Indirect



## SpekLED™ LED Tape

SpekLED™ LED Tape is a durable, high-efficiency solution perfect for a wide range of applications and form factors. Adjustable lengths allow for ultimate flexibility. Products include single color and color tunable options, as well as constant current and constant voltage.

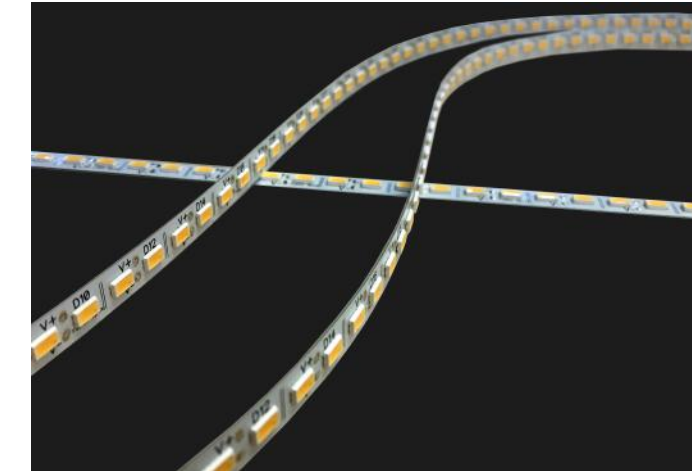


### Applications:

Linear, Long Length, Continuous Run, Curved, Edge Lighting, Downlights

# SpekLED™ Products

All SpekLED™ products are available in linear, square, and circular formats. They offer high efficiencies and a wide range of CCT and CRI options.



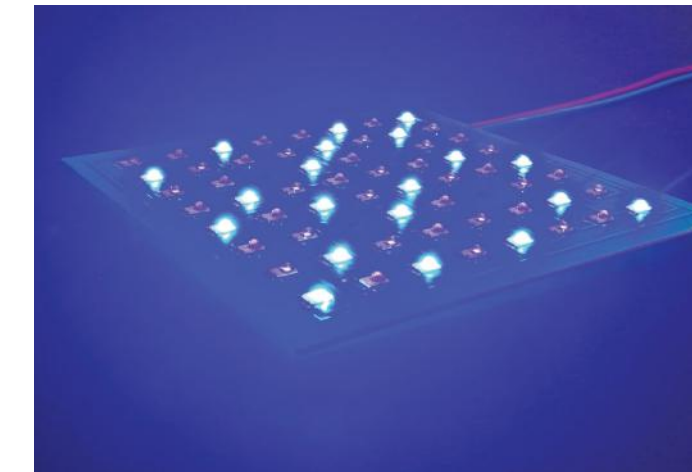
## SpekLED™ Flex

SpekLED™ Flex LED boards use a semi-rigid substrate which effectively bends around a variety of different curves and form factors.



### Applications:

Linear, Long Length, Continuous Run, Curved, Edge Lighting, Downlights



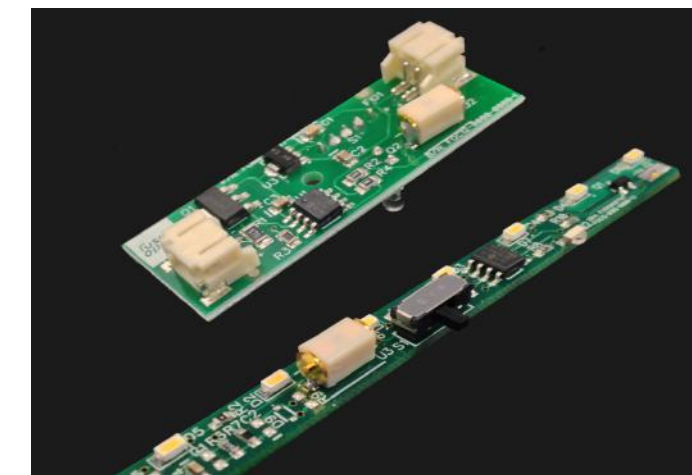
## SpekLED™ Color

SpekLED™ RGB LED boards mix red, green and blue LEDs on a single board. SpekLED™ Color uses both RGB LEDs and single color chips. UV boards are available in UV-A (315-400 nm) and UV-B (280-315 nm). Blue boards are available from 450 nm to 495 nm.



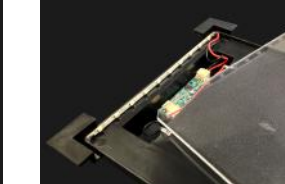
### Applications:

Remote Phosphor, Grow Lighting, Industrial Processing "Curing", Ambient Environments. Color Changing Panels, Machine Vision



## SpekLED™ SmartBoard

SpekLED™ SmartBoard integrates control and sensor functionality with our latest LED technology. Utilizing daylight, occupancy and vibration sensors with microprocessor technology, SpekLED™ SmartBoards offer additional control over standard LED modules.



### Applications:

Daylight Harvesting, Connected Luminaires, Consumer Electronics