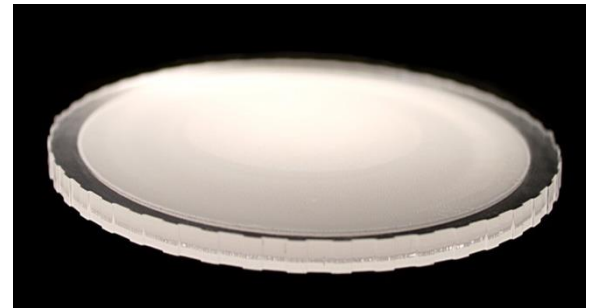
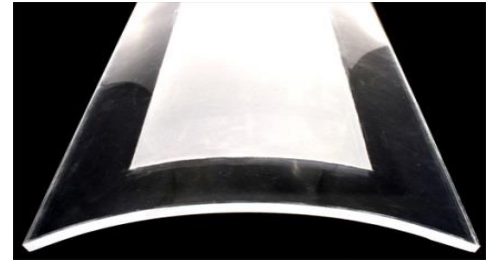
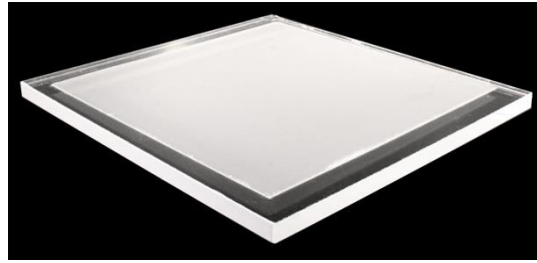


eLED™ Technology



Ten years of experience with edge lighting have allowed us to develop several innovative patented approaches to guiding light.

The combination of these approaches opens new a multitude of new possibilities for general and decorative lighting while achieving very high efficiencies and beam control.

BENEFITS

- Efficiencies up to 85%
- Ultra thin fixture profiles
- Wide choice of beam distributions
- No tooling costs
- Less fixture components
- Choice of surface finishes and effects
- Options for high temperature applications via glass substrates



HIGHLY CUSTOMIZABLE PRODUCT

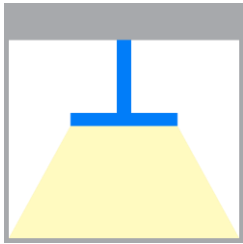
Our eLED™ offer extremely high customization flexibility at little to no cost.

Each one of the standard options can be modified to customer specifications.

Options include:

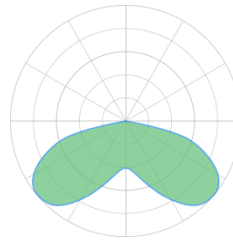
- Length, Width and Thickness
- 3D Shape
- Extraction Layer Finish
- Extraction Layer Patten
- Beam Distribution
- Extraction Sides
- Fastening and other features
- Material

BEAM CONTROL

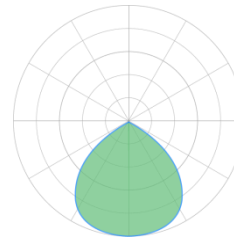


DIRECT

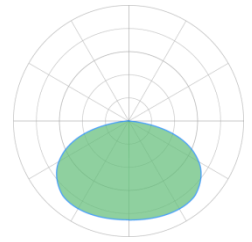
Pendants, Troffers,
Down Lights,
Surface Mounted
and Decorative



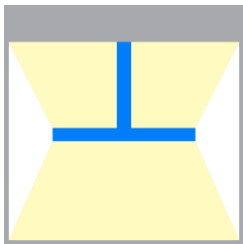
Batwing



60°

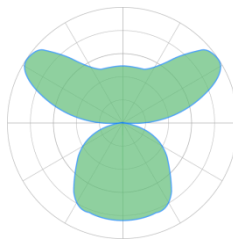


120°

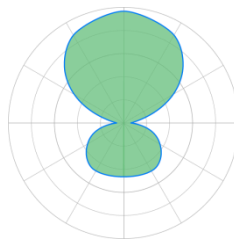


DIRECT/INDIRECT

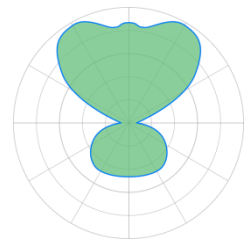
Pendants and
Decorative



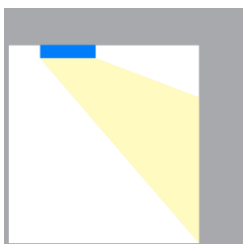
60/40 Batwing



70/30

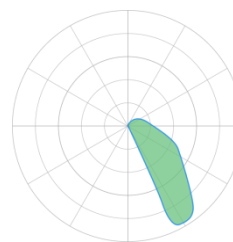


80/20

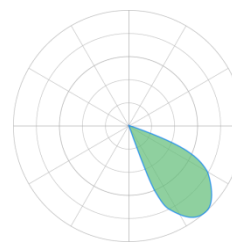


WALL WASHING

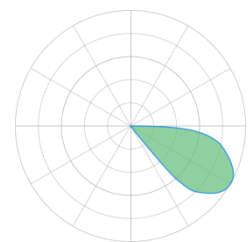
Wall Washers,
Grazers and
Pendants



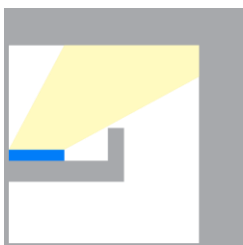
30° Tilt



45° Tilt

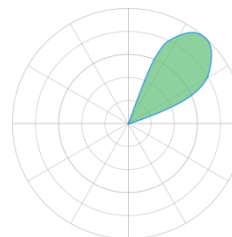


60° Tilt

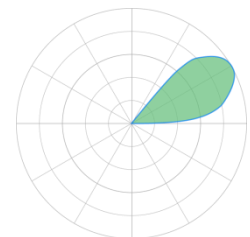


COVE

Cove lighting



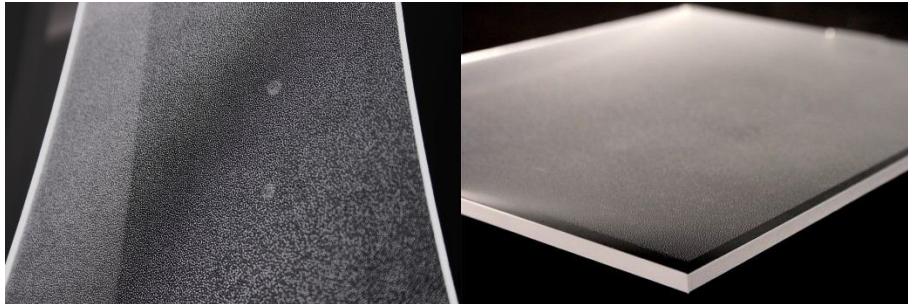
45° Tilt



60° Tilt



SURFACE FINISHES



MICRO DOT PATTERN

Ideal for high uniformity, “snowflake look” and semi-transparent look when not lit



SATIN SOLID

Flexibility between high uniformity and ultra-high efficiency. Great alternative to direct-lit luminaires



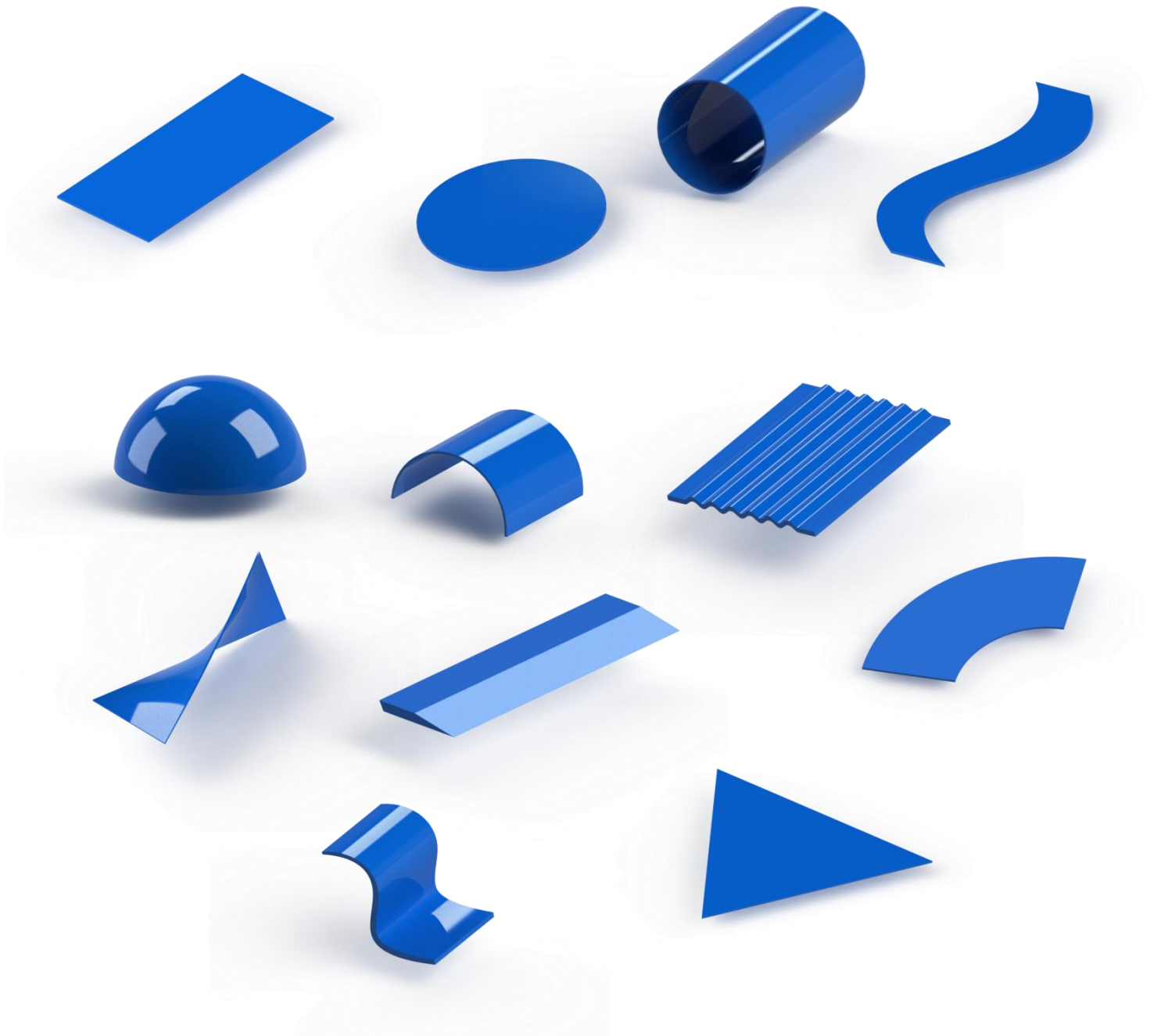
SATIN PATTERNED

Specific areas of the light guide can be left completely transparent, which adds unique OLED-like effects to edge lighting. Ultra-high efficiency.

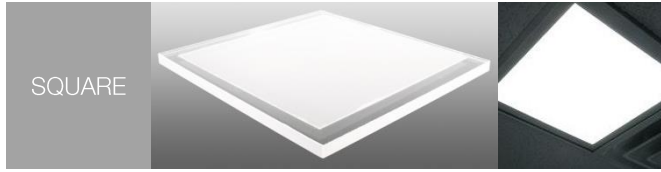


FORM FACTORS

Fusion Optix Light Guides are available in a variety of shapes. Although in many cases the shapes are purely an aesthetic feature, they often are needed to achieve the precise beam shapes of a luminaire.



STANDARD OFFERINGS



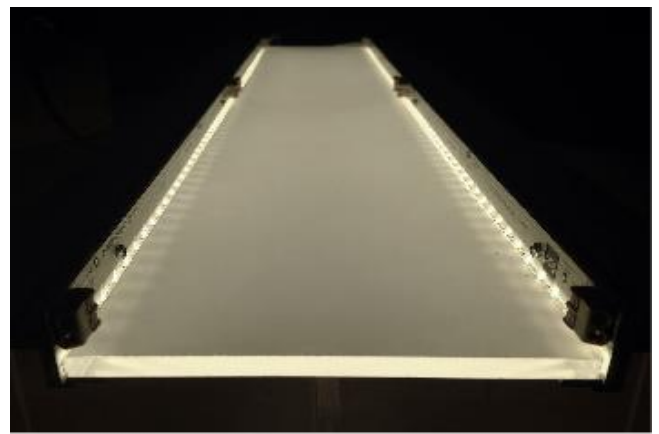
Part number	LED Sides	Extraction Side	Size (mm)	Thickness (mm)
FOC07-1001-0000	Single-Edge	Single	87 x 87	4.5
FOC07-1002-0000	Single-Edge	Single	137 x 137	4.5
FOC07-1003-0000	Single-Edge	Single	188 x 188	4.5
FOC07-1004-0000	Single-Edge	Single	239 x 239	4.5
FOC07-1005-0000	Single-Edge	Single	290 x 290	4.5
FOC07-1006-0000	Single-Edge	Single	595 x 595	4.5
FOC07-1007-0000	Double-Edge	Single	87 x 87	4.5
FOC07-1008-0000	Double-Edge	Single	137 x 137	4.5
FOC07-1009-0000	Double-Edge	Single	188 x 188	4.5
FOC07-1010-0000	Double-Edge	Single	239 x 239	4.5
FOC07-1011-0000	Double-Edge	Single	290 x 290	4.5
FOC07-1012-0000	Double-Edge	Single	595 x 595	4.5
FOC07-1013-0000	Single-Edge	Double	87 x 87	4.5
FOC07-1014-0000	Single-Edge	Double	137 x 137	4.5
FOC07-1015-0000	Single-Edge	Double	188 x 188	4.5
FOC07-1016-0000	Single-Edge	Double	239 x 239	4.5
FOC07-1017-0000	Single-Edge	Double	290 x 290	4.5
FOC07-1018-0000	Single-Edge	Double	595 x 595	4.5
FOC07-1019-0000	Double-Edge	Double	87 x 87	4.5
FOC07-1020-0000	Double-Edge	Double	137 x 137	4.5
FOC07-1021-0000	Double-Edge	Double	188 x 188	4.5
FOC07-1022-0000	Double-Edge	Double	239 x 239	4.5
FOC07-1023-0000	Double-Edge	Double	290 x 290	4.5
FOC07-1024-0000	Double-Edge	Double	595 x 595	4.5

Part number	LED Sides	Extraction Side	Size (mm)	Thickness (mm)
FOC07-1025-0000	Single-Edge	Single	290 x 36	4.5
FOC07-1026-0001	Single-Edge	Single	595 x 36	4.5
FOC07-1027-0002	Single-Edge	Single	290 x 87	4.5
FOC07-1028-0003	Single-Edge	Single	595 x 87	4.5
FOC07-1029-0004	Single-Edge	Single	1204 x 87	4.5
FOC07-1030-0005	Single-Edge	Single	1204 x 267	4.5
FOC07-1031-0006	Double-Edge	Single	290 x 36	4.5
FOC07-1032-0007	Double-Edge	Single	595 x 36	4.5
FOC07-1033-0008	Double-Edge	Single	290 x 87	4.5
FOC07-1034-0009	Double-Edge	Single	595 x 87	4.5
FOC07-1035-0010	Double-Edge	Single	1204 x 87	4.5
FOC07-1036-0011	Double-Edge	Single	1204 x 267	4.5
FOC07-1037-0012	Single-Edge	Double	290 x 36	4.5
FOC07-1038-0013	Single-Edge	Double	595 x 36	4.5
FOC07-1039-0014	Single-Edge	Double	290 x 87	4.5
FOC07-1040-0015	Single-Edge	Double	595 x 87	4.5
FOC07-1041-0016	Single-Edge	Double	1204 x 87	4.5
FOC07-1042-0017	Single-Edge	Double	1204 x 267	4.5
FOC07-1043-0018	Double-Edge	Double	290 x 36	4.5
FOC07-1044-0019	Double-Edge	Double	595 x 36	4.5
FOC07-1045-0020	Double-Edge	Double	290 x 87	4.5
FOC07-1046-0021	Double-Edge	Double	595 x 87	4.5
FOC07-1047-0022	Double-Edge	Double	1204 x 87	4.5
FOC07-1048-0023	Double-Edge	Double	1204 x 252	4.5

CUSTOMIZATION OPTIONS

<p>LENGTH Up to 8' (2.44m)</p>	<p>WIDTH Up to 4' (1.22m)</p>	<p>THICKNESS Up to .708" (18mm)</p>	<p>2D FORM FACTORS Square Linear Circular</p>	<p>3D FORM FACTORS Arcs Waves Tubes</p>
<p>SURFACE FINISH Dot Pattern Satin Solid Satin Pattern</p>	<p>EXTRACTION SIDES Single Double</p>	<p>BEAM PROFILES Batwing Wide/Flood</p>	<p>PERFORMANCE High Efficiency High Uniformity</p>	<p>MATERIALS PMMA Glass</p>

APPLICATIONS



Light Guides designed and manufactured in-house in Woburn MA

COMPATIBLE PRODUCTS

LED LIGHT ENGINES FOR EDGE LIGHTING

Fusion Optix offers several standard light engines designed specifically with edge lighting in mind.

Benefits include high brightness per linear ft., efficacies of up to 150 lm/W, easy interconnectability.



280 Series Single Row

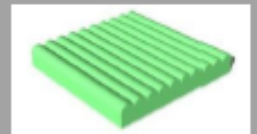
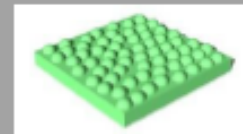
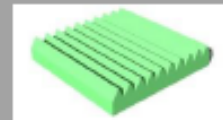


FLEX302 Series

BEAM SHAPING FILMS

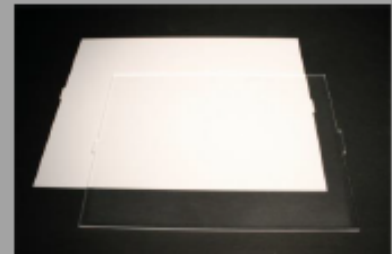
Beam shapers modify the beam coming out from the light guide extraction areas .

Effects include beam narrowing, beam splitting and glare reduction.



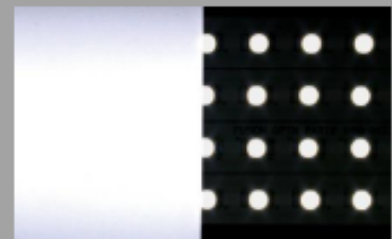
REFLECTORS

In edge lit applications reflectors recycle any stray light that does not get immediately extracted from the extraction area, maximizing overall luminaire efficacy.



DIFFUSERS

In edge-lighting diffusers modify the beam properties by evening out the beam, increase emitting surface uniformity and hide the micro – dot pattern of these types of light guides.

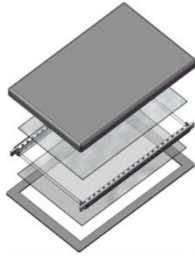




OEM SUPPORT



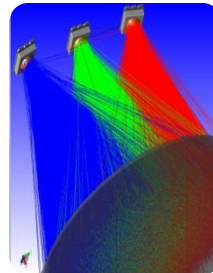
Product Design



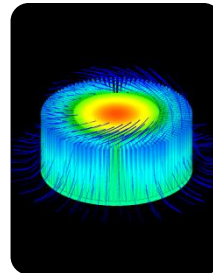
BOM Development



Product Testing



Optical Modeling



Thermal Modeling



Quality Control

This information has been carefully compiled from experience gained in the laboratory and under commercial conditions in a wide range of applications. However, the product's performance and its suitability depends heavily on the particular conditions of use. Fusion Optix, Inc. assumes no responsibility for suitability or use of our products in any lighting products or other applications. The use of our products at excessive temperatures with high UV output light sources will likely cause degradation of the material. We recommend that customers satisfy themselves that each product meets their requirements in all respects. This information is being provided by Fusion Optix, Inc. free of charge as a courtesy to customer, and Fusion Optix, Inc. HEREBY DISCLAIMS ALL REPRESENTATIONS, WARRANTIES AND LIABILITIES WITH RESPECT TO THE INFORMATION AND USE THERE OF. Fusion Optix™ is a trademark exclusive to Fusion Optix, Inc. All rights reserved. Above is subject to change without notice from Fusion Optix, Inc.

Notes

- 1) For information regarding product pricing, availability, and Additional Options such as custom form factors, sizes, diffusion angles and materials please contact a Fusion Optix Sales representative at the address and phone number below.
- 2) Custom product samples are available for a nominal set-up/development fee. Please contact a Fusion Optix Sales representative for more information.
- 3) Buyer is responsible for all shipping charges.
- 4) Standard sample orders usually ship within 1 week. Custom orders may take longer.